



27 Alston Drive, Berowra Heights

Property ID: 6485426

Contact Agent



Land Area: 718 sqm

Great location with stunning views in a quiet cul-de-sac

This large family home is located in a quiet cul-de-sac overlooking bushland to Berowra Waters. This spacious home offers spectacular views from the entertaining deck and large swimming pool area as well as the main living areas. At the bottom of the garden you'll find a secret hide-away - a separate parents' retreat perfect to relax while the kids enjoy the garden and swimming pool. They say it is all about the location and locations do not get much better than this.

- ?4 bedrooms plus separate study
- ?2 bathrooms including main with ensuite plus separate toilet
- ?Timber entertaining deck overlooking the pool
- ?Stunning bushland views to Berowra Waters
- ?Double garage with extra car space
- ?Short walking distance to local primary schools, village shops and transport.
- ?Land size 718sq



Barry Devine

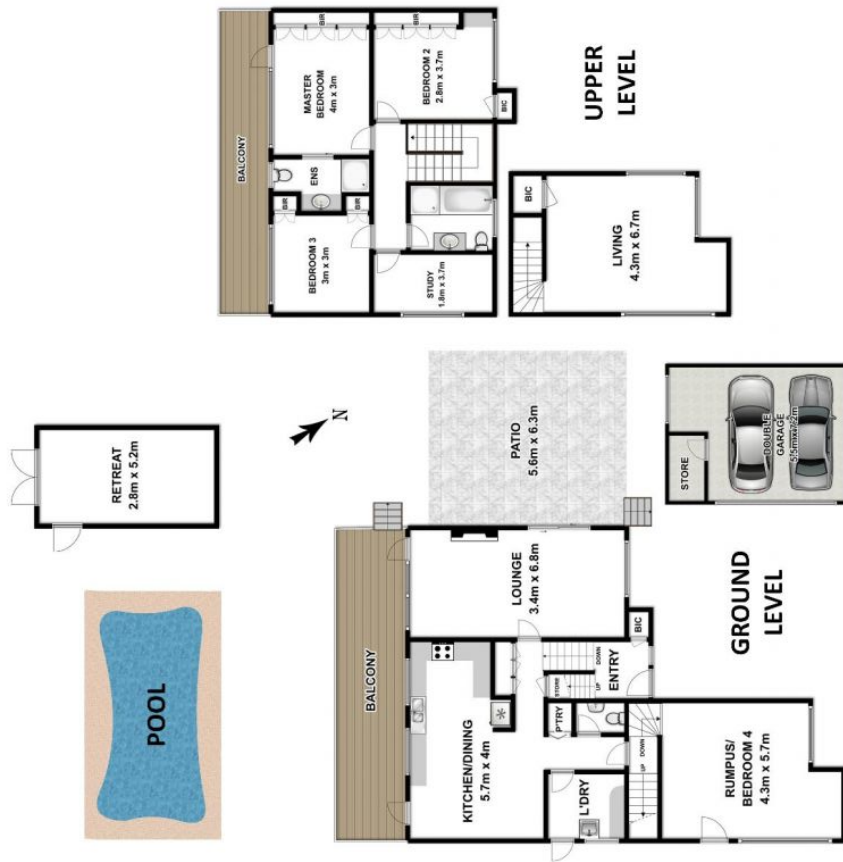
Principal - Barry Devine Property

M: 0449 175 108

E: barry.devine@smileelite.com

Features

- Area Views
- Close to Schools
- Close to Shops
- Living Area
- Pool
- Study



27 Alston Drive
BEROWRA HEIGHTS

Measurements are approximate. Not to scale. Illustrative purposes only.