



10 Copeland Street, Alexandria

For Sale \$1,050,000.00

Property ID: 6485488



Land Area: 108 sqm



Barry Devine

Principal - Barry Devine Property

M: 0449 175 108

E: [barry.devine@smileelite.com](mailto:barry.devine@smileelite.com)

### Cosy Victorian Terrace

This freshly renovated Victorian terrace is bathed in natural light and enjoys the best of Erskineville and Newtown's vibrant lifestyle.

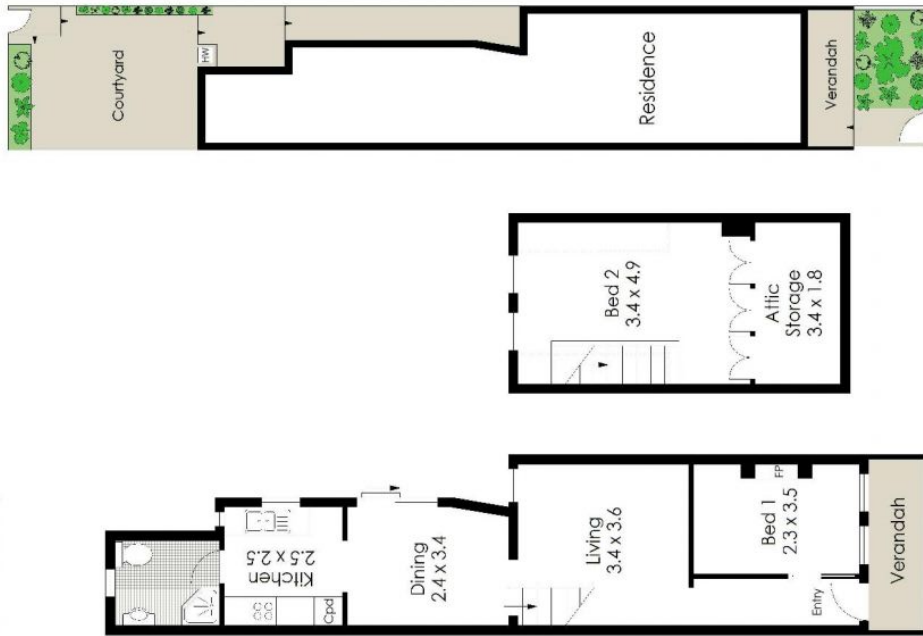
Features include:

- One single bedroom with period feature fireplace downstairs
- Large attic master bedroom conversion with exposed beams upstairs
- Separate living and dining areas with polished timber floors
- Large kitchen with ample storage space
- Modern bathroom in crisp black and white
- Private north facing entertainer's courtyard
- Potential for off street parking, S.T.C.A.

Enjoy a convenient position directly opposite Erskineville Oval and just a short stroll to Erskineville Village and King Street's vibrant eateries and shopping. Easy walk to bus and train facilities.

### Features

- Close to Shops
- Close to Transport
- Living Area



Ground Floor      First Floor      Site Plan (Scale Approximate)

\*Internal Area Approx: 67 sqm

Disclaimer: Sydney Floor Plans A.B.N. 80 932 665 571, mob. 0402073101.  
This plan is for general information purposes only. It is not intended to be used for construction purposes.  
Dimensions are approximate and should not be relied upon for specific detail.